

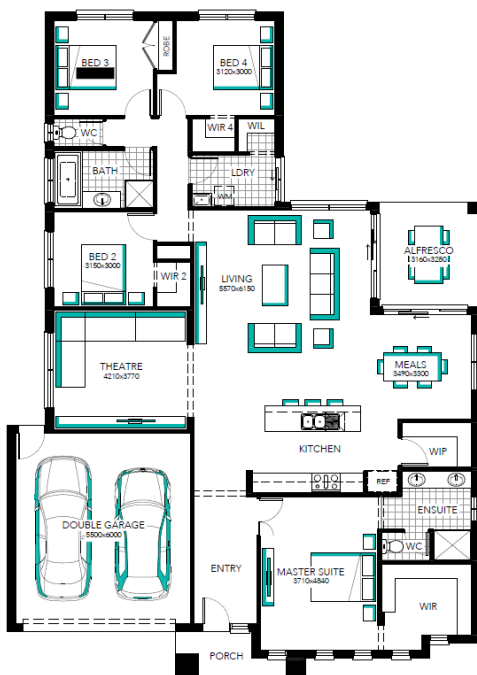
**FREMONT FAÇADE INCLUDED**



**Paul Gray  
Builders**

## ROSEMONT 26 MK2

TURN KEY INCLUSIONS



L18 Brooklyn Dv,  
**GOLDEN SQUARE**



Lot size: 826m<sup>2</sup>

House size: 26 sq's  
(20.09 living)

House and Land Price:

**\$533,369**

For more information about our House and Land packages, please contact:

*Pricing is true and correct as at  
28/11/2017. Price is subject to change  
without notice. All site plans are  
approximate and are subject to rescode*

PAUL GRAY BUILDERS

109 High St, Bendigo 3550

ph 03 5444 5054

Jenny Cushing: 0400 823 309 [jenny@paulgraybuilders.com.au](mailto:jenny@paulgraybuilders.com.au)

# TURN KEY INCLUSIONS

Floor coverings - Vinyl Planks or Tiles. Carpet to balance.

Translucent Glazing to Bathroom, Ensuite and Toilet Windows

Window Locks & Flyscreens

Blinds to all clear glazed windows

Brick above all Windows

Clothesline and Brick letterbox

External Concrete Paving including 40m<sup>2</sup> for Driveway

Colorbond Roof or Roof Tiles

900mm upright cooker, canopy rangehood and Dishwasher

Ducted Heating and Evaporative Cooling

Evacuated tube Solar Hot Water System

Plenty of Light points and Power points

Downlights in main main living and entry

3 coat paint system

Generous Site Allowances

Bushfire Assessment Level 12.5 Requirements Included

5000L CFA tank as per planning permit requirements

Service connections as per siting provided

Just add the Fencing and Landscaping and you're done!



**Paul Gray  
Builders**