
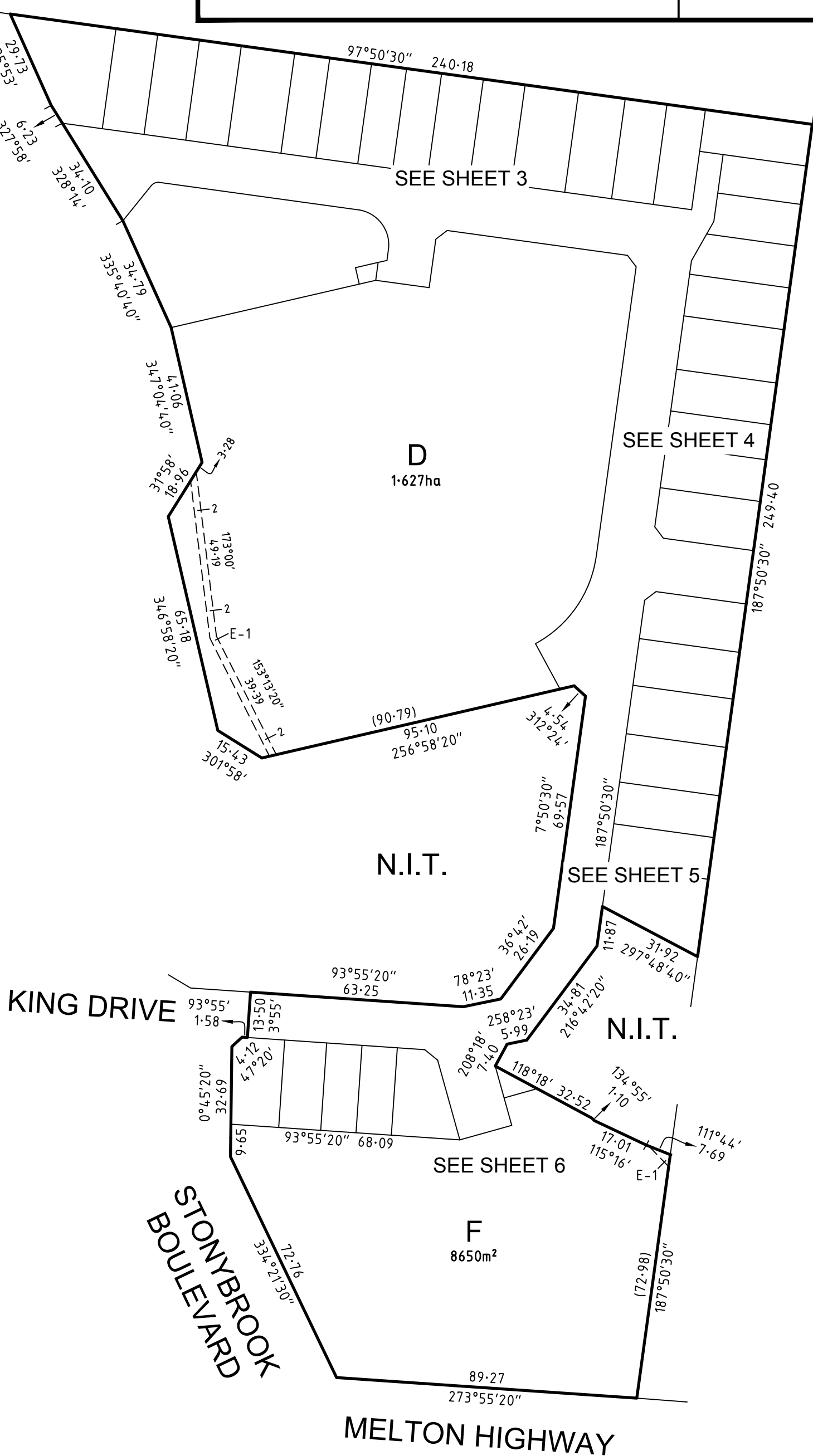
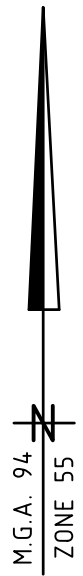


PLAN OF SUBDIVISION		LV USE ONLY EDITION	PLAN NUMBER PS 713327R	
LOCATION OF LAND		COUNCIL NAME: CITY OF MELTON		
PARISH: MARIBYRNONG TOWNSHIP: - SECTION: B CROWN ALLOTMENT: 2 (PART) CROWN PORTION: - TITLE REFERENCES: Vol. Fol. LAST PLAN REFERENCE/S: PS 705783J (LOT C) POSTAL ADDRESS: 868 - 898 MELTON HIGHWAY (At time of subdivision) HILLSIDE, 3037 MGA94 Co-ordinates E 300 130 (of approx centre of N 5 826 190 land in plan) ZONE 55				
VESTING OF ROADS AND/OR RESERVES		NOTATIONS		
IDENTIFIER	COUNCIL/BODY/PERSON	LOTS 1 - 300 HAVE BEEN OMITTED FROM THIS PLAN. EASEMENT E-1 IS SHOWN IN EXAGGERATED POSITION. OTHER PURPOSES OF THE PLAN: REMOVAL OF THAT PART SEWERAGE EASEMENT E-1 ON PS705783J AS AFFECTS KING DRIVE ON THIS PLAN. REMOVAL OF SEWERAGE EASEMENT E-2 ON PS705783J AS AFFECTS KING DRIVE ON THIS PLAN. GROUNDS FOR REMOVAL: BY AGREEMENT OF ALL INTERESTED PARTIES UPON REGISTRATION OF THIS PLAN.		
RESERVE No.1 RESERVE No.2 RESERVE No.3 ROAD R1	CITY OF MELTON JEMENA ELECTRICITY NETWORKS (VIC) LTD JEMENA ELECTRICITY NETWORKS (VIC) LTD CITY OF MELTON			
NOTATIONS				
DEPTH LIMITATION 15-24 METRES BELOW THE SURFACE APPLIES TO ALL THE LAND IN THIS PLAN. STAGING This is is not a staged subdivision. Planning permit No. SURVEY. THIS PLAN IS/ IS NOT BASED ON SURVEY. THIS SURVEY HAS BEEN CONNECTED TO PERMANENT MARKS No(s): 298 & 299 (MARIBYRNONG) THIS IS A SPEAR PLAN. STONYBROOK 3 2.565ha		37 LOTS		
EASEMENT INFORMATION				
LEGEND A-Appurtenant Easement E-Encumbering Easement R-Encumbering Easement (Road)				
Easement Reference	Purpose	Width (Metres)	Origin	Land Benefited/In Favour Of
E-1	SEWERAGE	2	C/E W343617N	CITY WEST WATER LTD
E-2	SEWERAGE	SEE PLAN	THIS PLAN	CITY WEST WATER CORPORATION
E-3	POWERLINE	1-50	THIS PLAN - SECTION 88 OF THE ELECTRICITY INDUSTRY ACT 2000	JEMENA ELECTRICITY NETWORKS (VIC) LTD
E-4	DRAINAGE SEWERAGE	SEE PLAN SEE PLAN	THIS PLAN THIS PLAN	CITY OF MELTON CITY WEST WATER CORPORATION
 SMEC Melbourne Survey T 9869 0813		SURVEYOR REF: 0571s-03 BRENDAN MUNARI VERSION H		ORIGINAL SHEET SIZE: A3 SHEET 1 OF 6

PLAN OF SUBDIVISION

PLAN NUMBER
PS 713327R



WARNING - This document is a working document in the SPEAR approval process. It is subject to revision and change and therefore should not be relied on. If you have any questions about this document please contact the person from SMEC who gave you access to SPEAR / this document: SPEAR Ref: S037299H 20/04/2017 01:03 pm

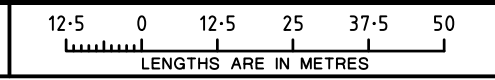
0571s-03 VER H.DWG BC/JO



SMEC

Melbourne Survey T 9869 0813 REF **0571s-03**

SCALE 1:1250



LENGTHS ARE IN METRES

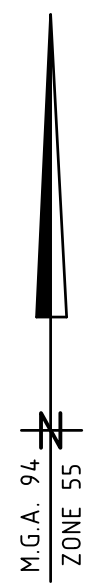
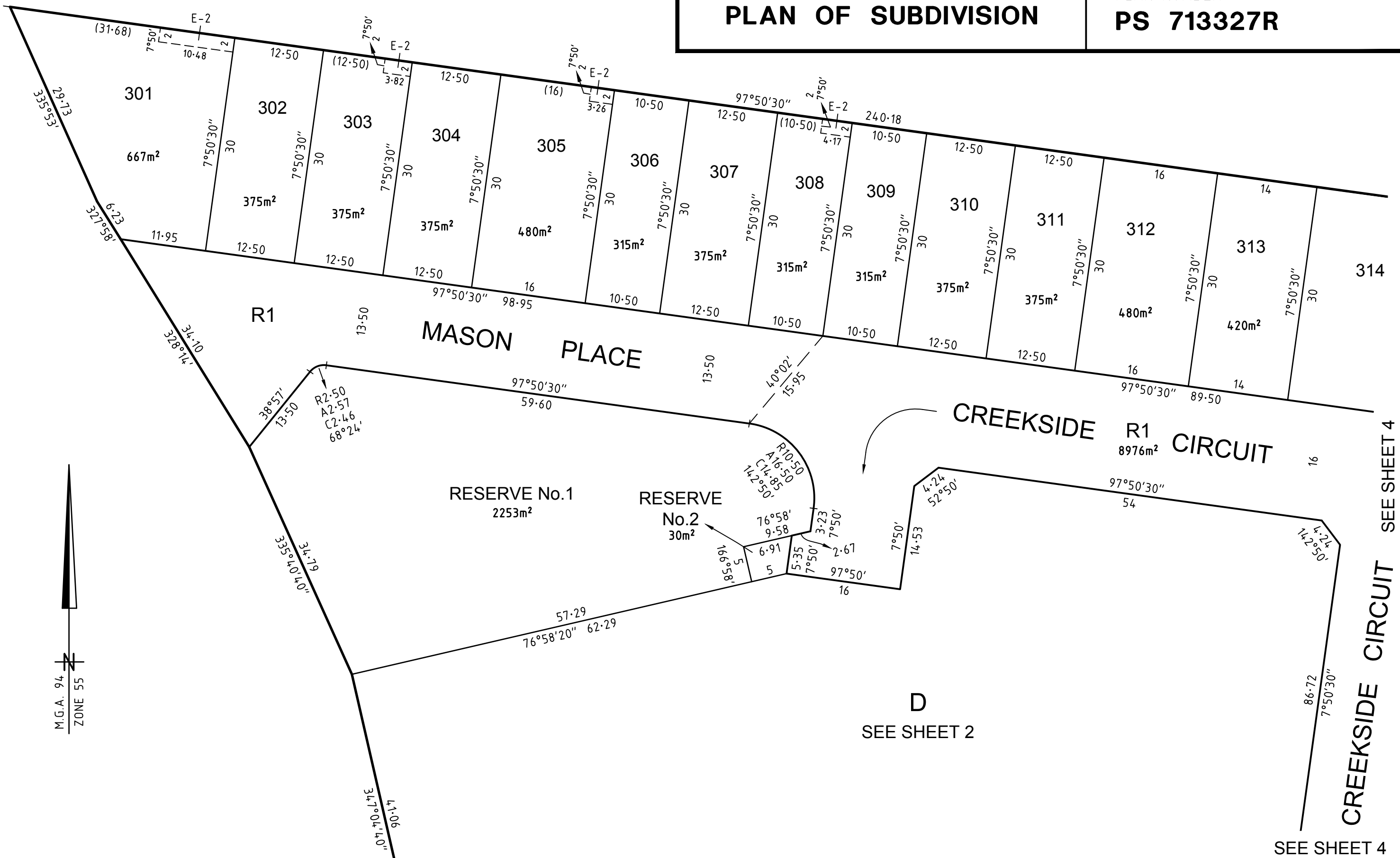
BRENDAN MUNARI VERSION H

ORIGINAL SHEET SIZE: A3

SHEET 2

PLAN OF SUBDIVISION

PLAN NUMBER
PS 713327R



SEE SHEET 4
SEE SHEET 4
SEE SHEET 4

0571S-03 VER H.DWG BC/JO

SMEC

Melbourne Survey T 9869 0813 REF 0571s-03

SCALE 1:500	<p>LENGTHS ARE IN METRES</p>	ORIGINAL SHEET SIZE A3	SHEET 3
BRENDAN MUNARI		VERSION H	

WARNING - This document is a working document in the SPEAR approval process. It is subject to revision and change and therefore should not be relied on. If you have any questions about this document please contact the person from SMEC who gave you access to SPEAR / this document. SPEAR Ref: S037299H 20/04/2017 01:03 pm

PLAN OF SUBDIVISION

PLAN NUMBER
PS 713327R

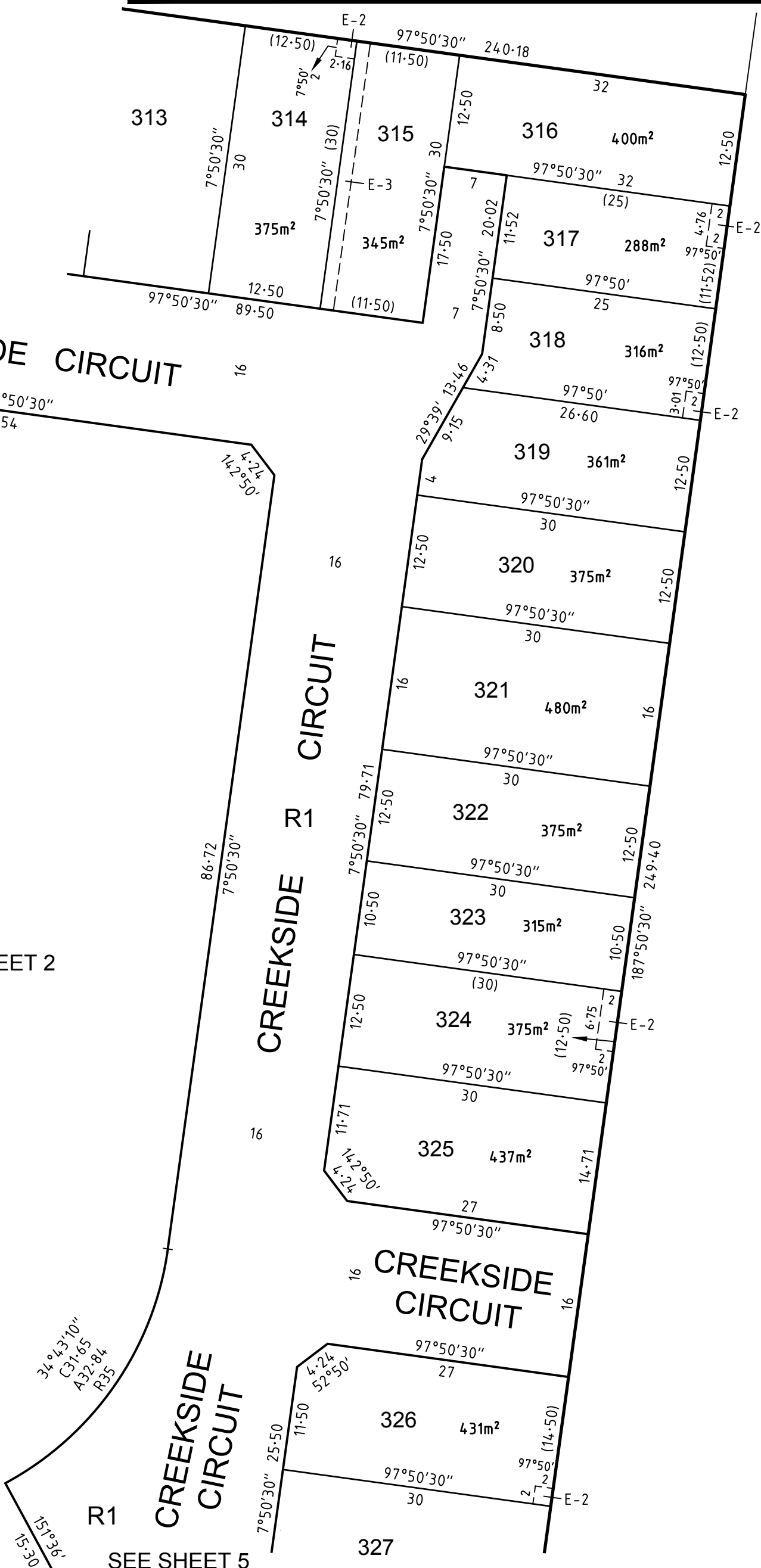
SEE SHEET 3

CREEKSIDE CIRCUIT



M.G.A. 94
ZONE 55

D
SEE SHEET 2



SEE SHEET 5

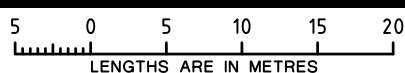


SMEC

Melbourne Survey T 9869 0813 REF 0571s-03

0571S-03 VER H.DWG BC/JO

SCALE
1:500



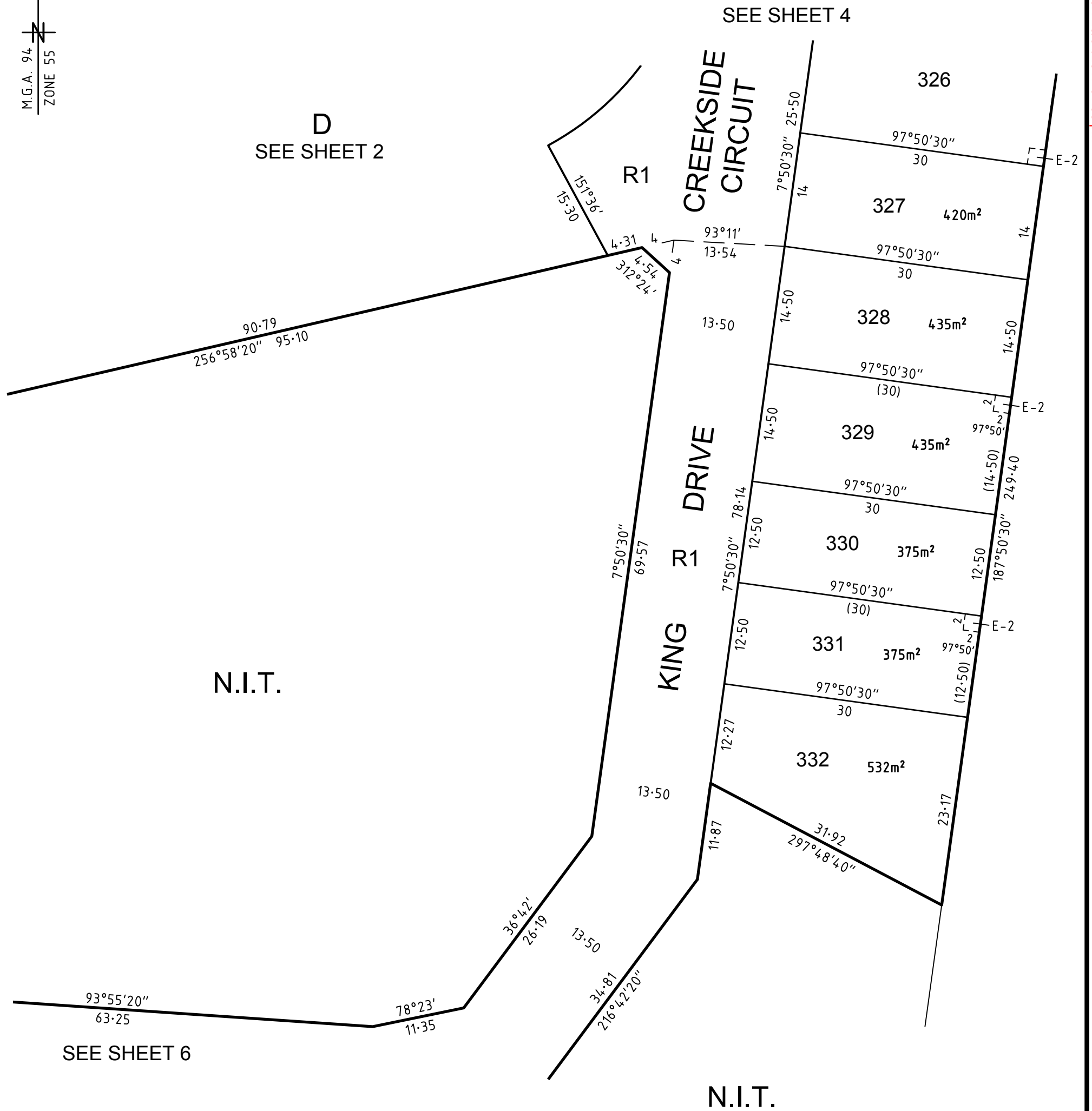
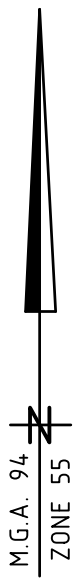
ORIGINAL SHEET
SIZE: A3

SHEET 4

BRENDAN MUNARI

VERSION H

WARNING - This document is a working document in the SPEAR approval process. It is subject to revision and change and therefore should not be relied on. If you have any questions about this document please contact the person from SMEC who gave you access to SPEAR / this document: SPEAR Ref: S037299H 20/04/2017 01:03 pm



WARNING - This document is a working document in the SPEAR approval process. It is subject to revision and change and therefore should not be relied on. If you have any questions about this document please contact the person from SMEC who gave you access to SPEAR / this document: SPEAR Ref: S037299H 20/04/2017 01:03 pm

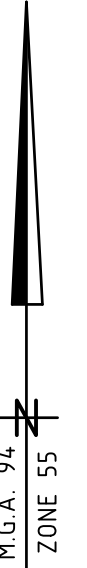
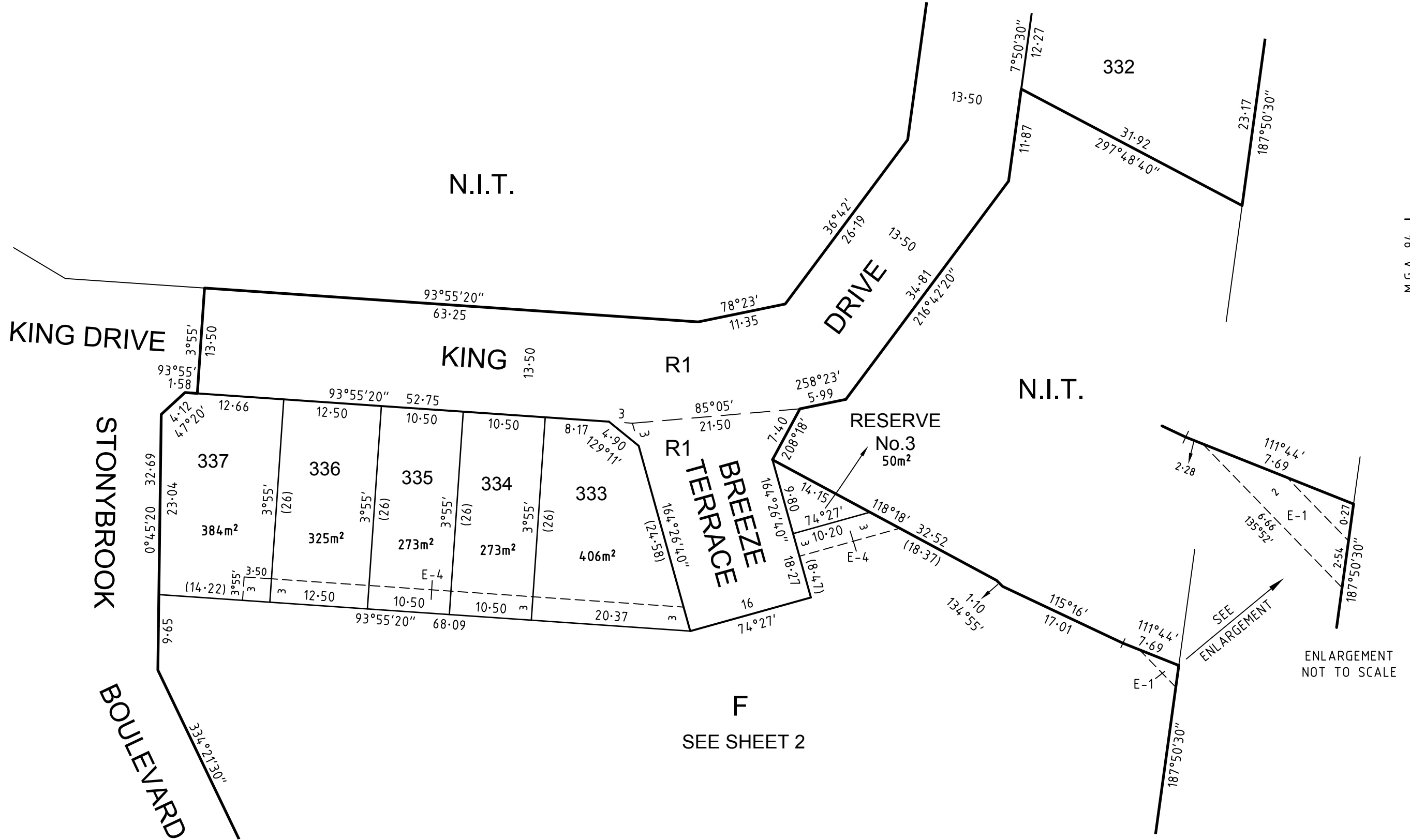
SCALE 1:500	<p>LENGTHS ARE IN METRES</p>	ORIGINAL SHEET SIZE: A3
BRENDAN MUNARI		VERSION H

ORIGINAL SHEET SIZE: A3	SHEET 5
----------------------------	---------

PLAN OF SUBDIVISION

PLAN NUMBER
PS 713327R

SEE SHEET 5



ENLARGEMENT NOT TO SCALE

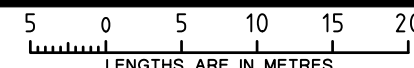
0571S-03 VER H.DWG BC/JO



SMEC

Melbourne Survey T 9869 0813 REF 0571s-03

SCALE 1:500



LENGTHS ARE IN METRES

ORIGINAL SHEET SIZE A3 SHEET 6

BRENDAN MUNARI VERSION H

WARNING - This document is a working document in the SPEAR approval process. It is subject to revision and change and therefore should not be relied on. If you have any questions about this document please contact the person from SMEC who gave you access to SPEAR / this document. SPEAR Ref: S037299H 20/04/2017 01:03 pm